

3 differenti formati

VETRATE

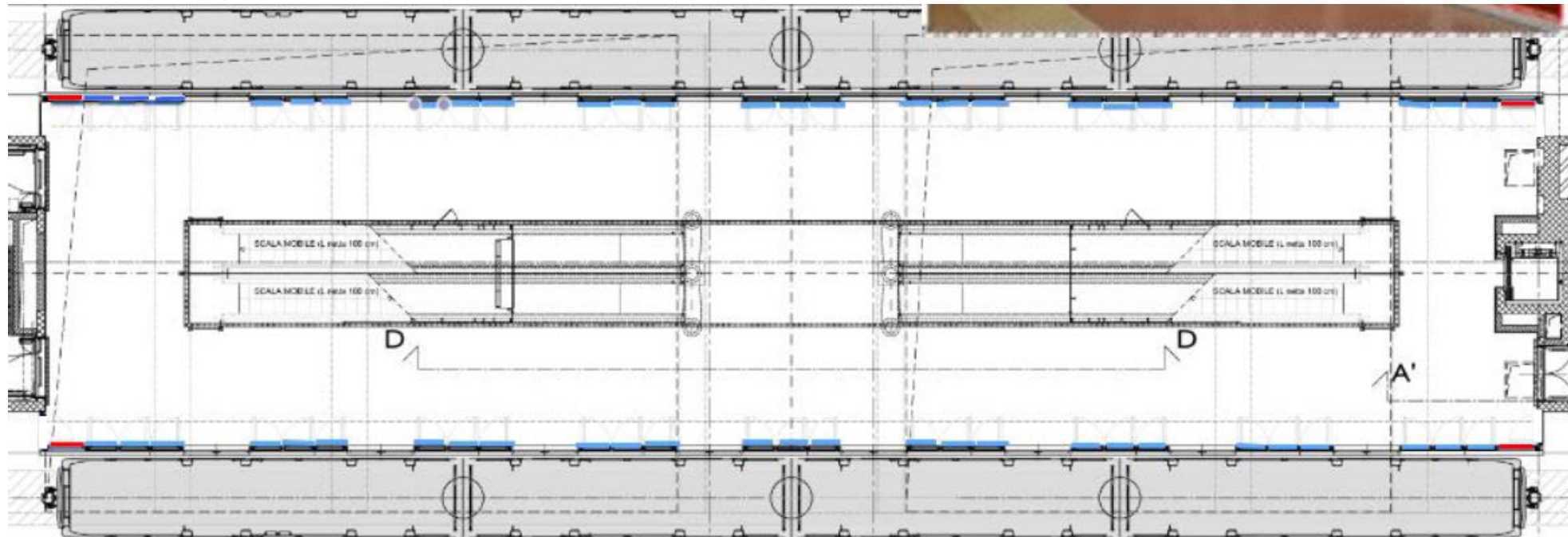
Elementi rossi – 2 vetri da 90,5 x 91h (per parete di porte)

VETRATE

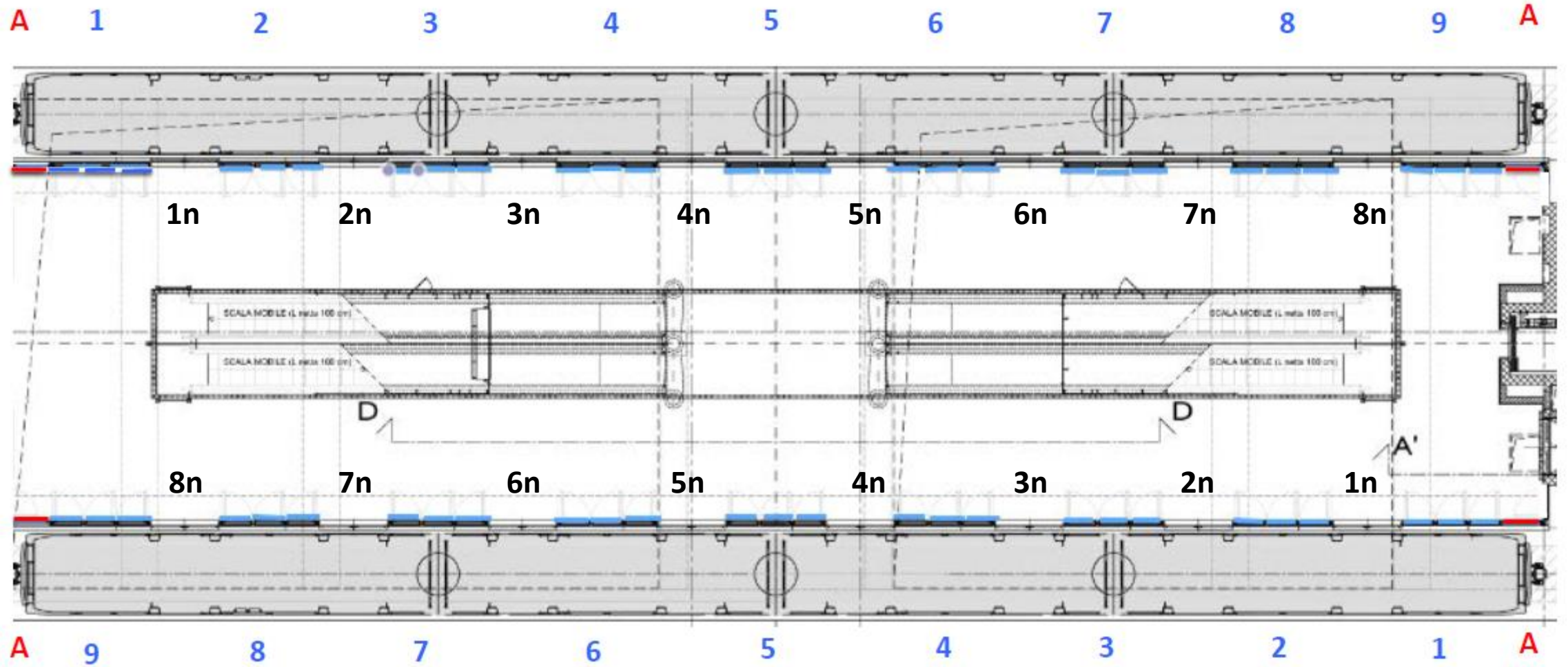
Elementi blu – 27 vetri da 79 x 91h (per parete di porte)

VETRATE APERTURA PORTE

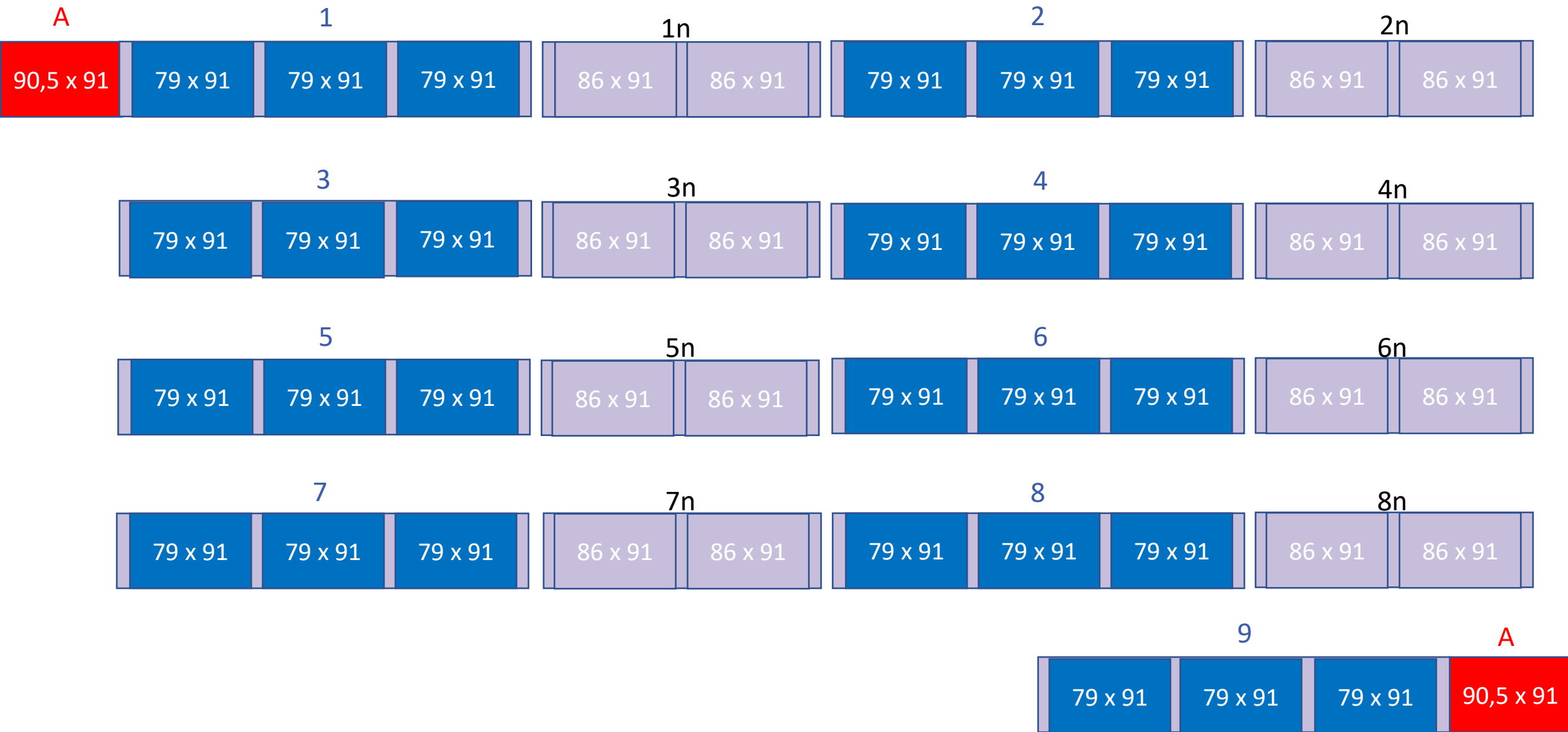
Elementi neutri – 16 vetri da 86 x 91h (per parete di porte)



Sequenza vetrate doors



Sequenza soggetti vetrata doors (da sx vs dx)



M4 Mantovane doors

Misure in cm

3 differenti formati

MANTOVANE

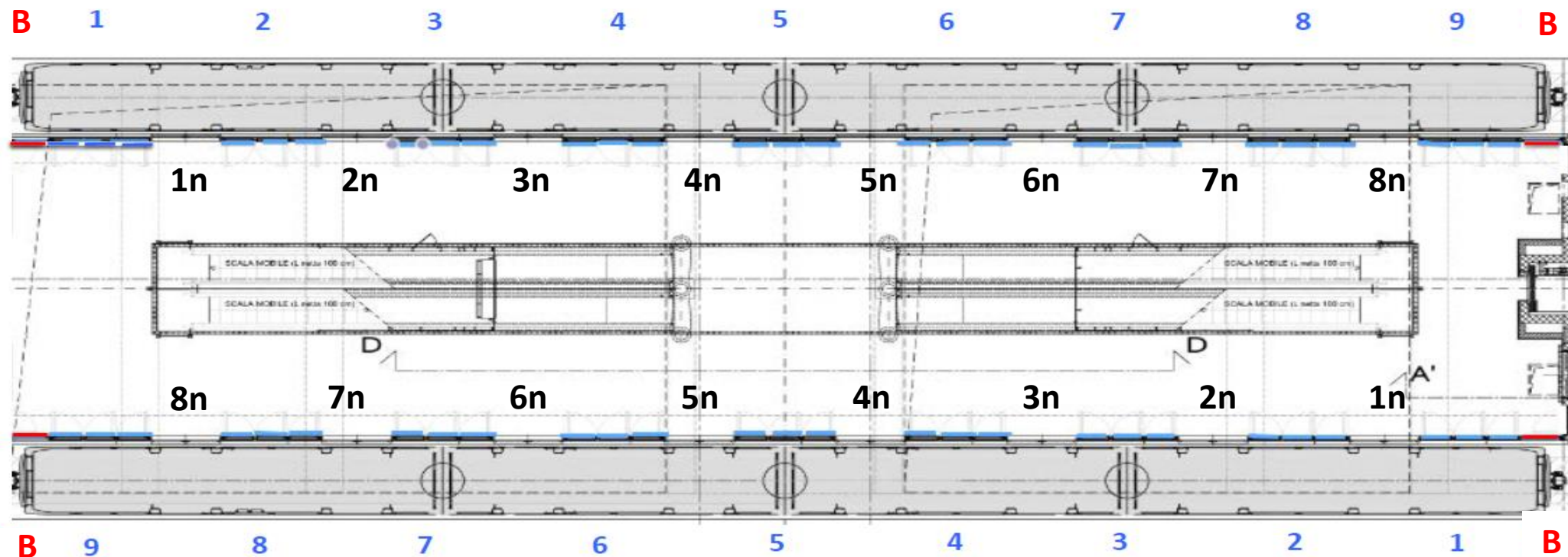
Elementi rossi – 2 mantovane da 138 x 65h (per parete di porte)

MANTOVANE

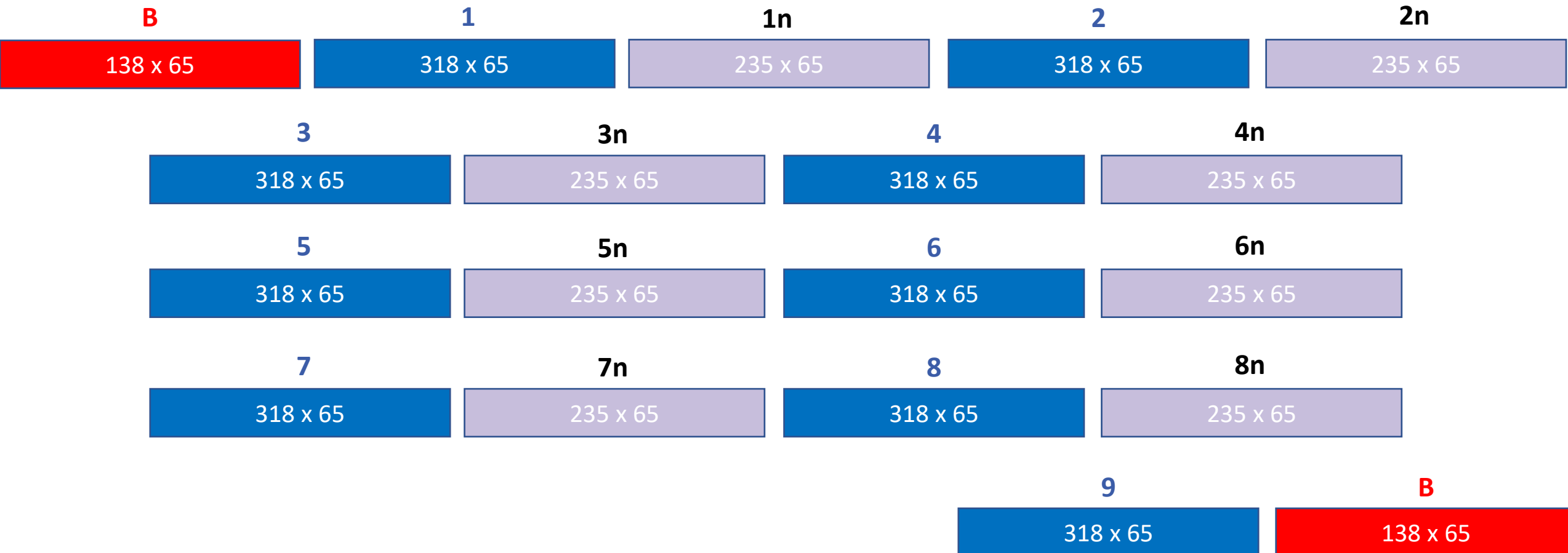
Elementi blu – 9 mantovane da 318 x 65h (per parete di porte)

MANTOVANE APERTURA PORTE

Elementi neutri – 8 mantovane da 235 x 65h (per parete di porte)

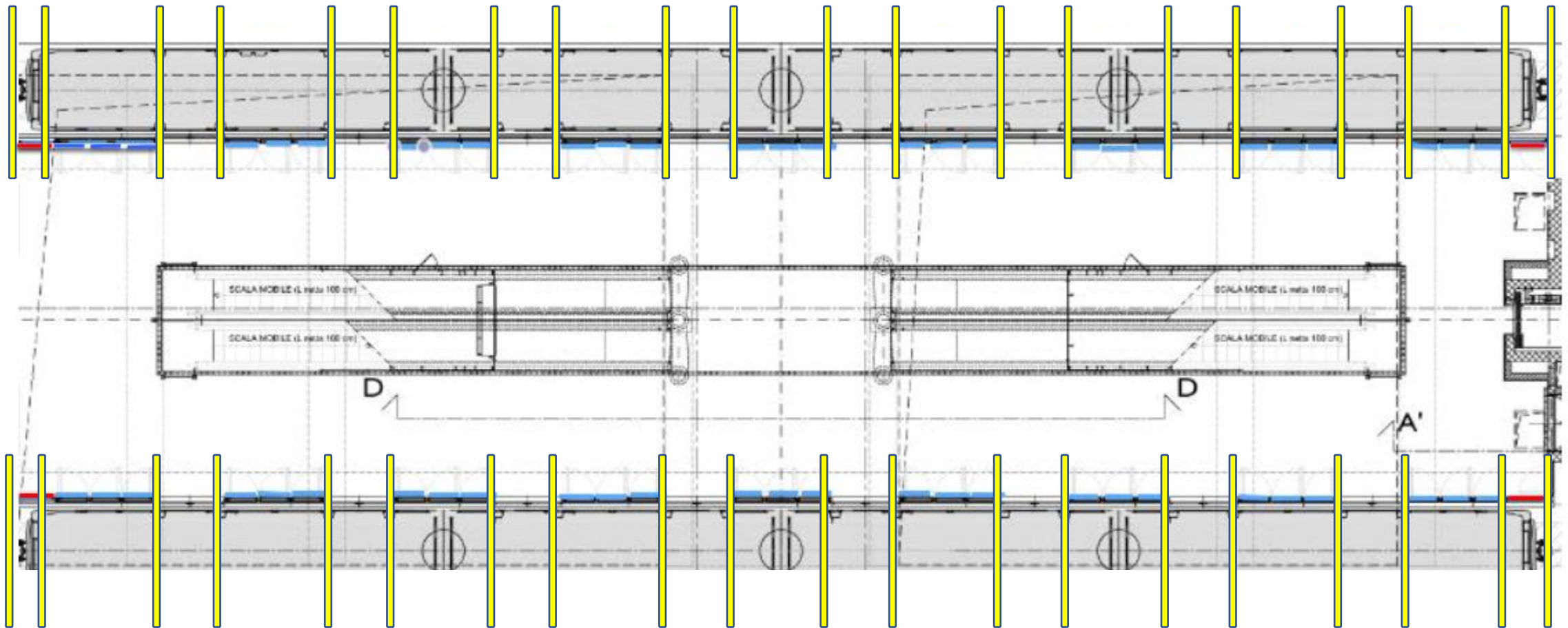


Sequenza soggetti mantovane doors (da sx vs dx)

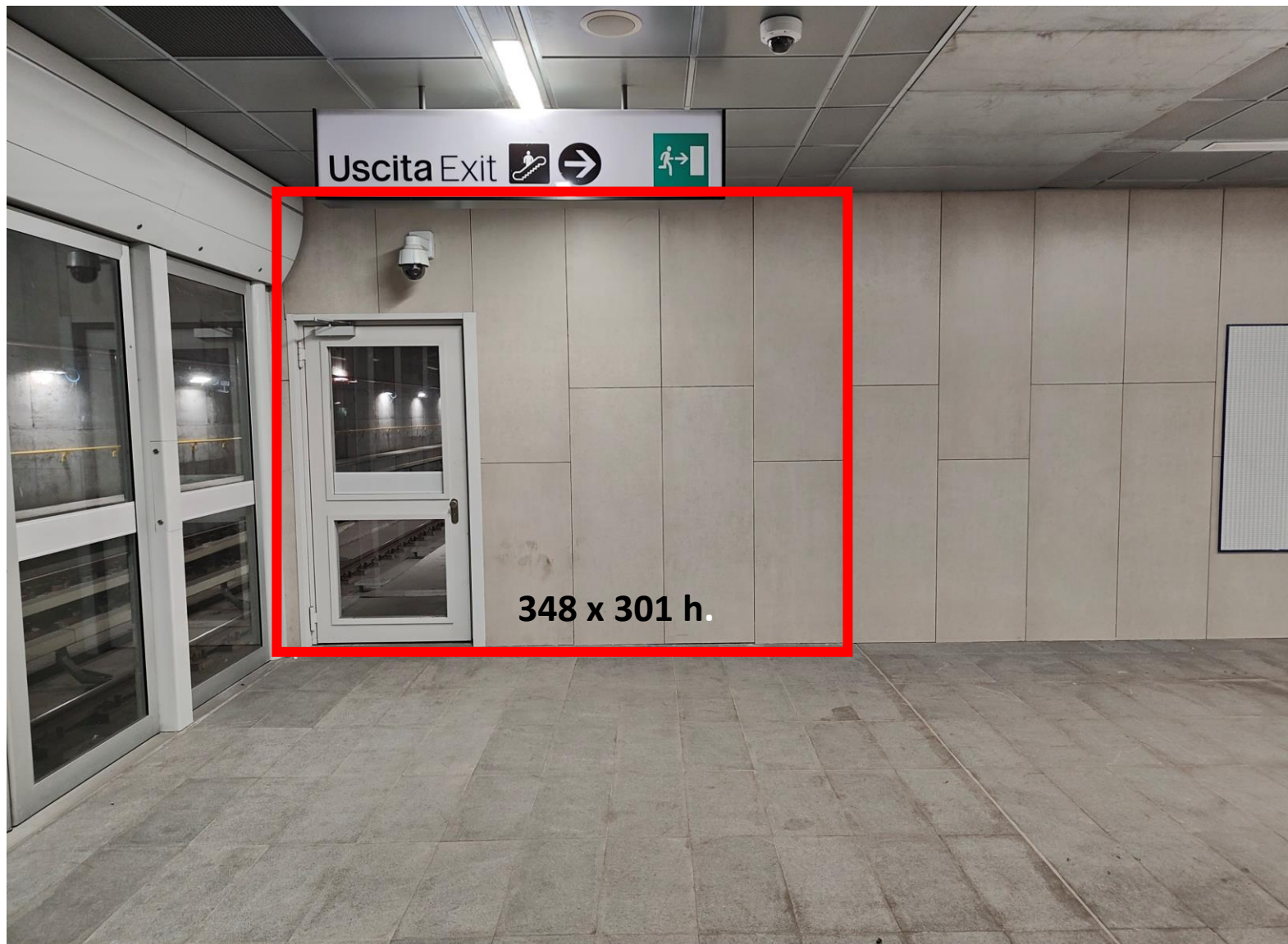


COLONNE

Elementi gialli – 20 colonne da 30 x 242h (per parete di porte)



PARETE DESTRA
348 x 301 h.



Parete lato sx

Misure in cm

PARETE SINISTRA
625 x 301 h.

